

BLUEVILLAS

São Pedro do Estoril

Fracção E Unit E

Planta de Moradia T4
Plan - Villa 4 Bed.

FRACÇÃO E Unit E

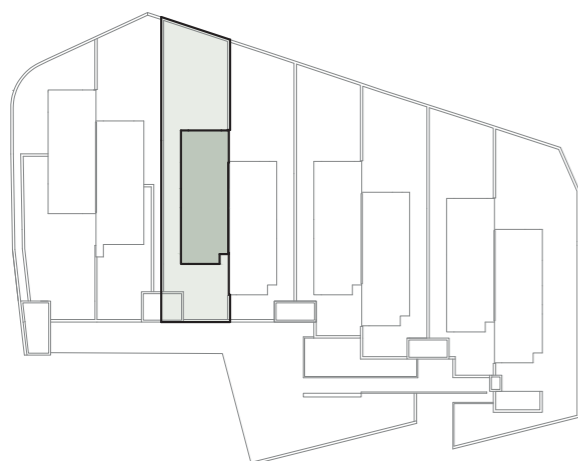
ÁREA BRUTA PRIVATIVA - 356 m²
GROSS PRIVATE AREA

VARANDAS - 71 m²
BALCONIES

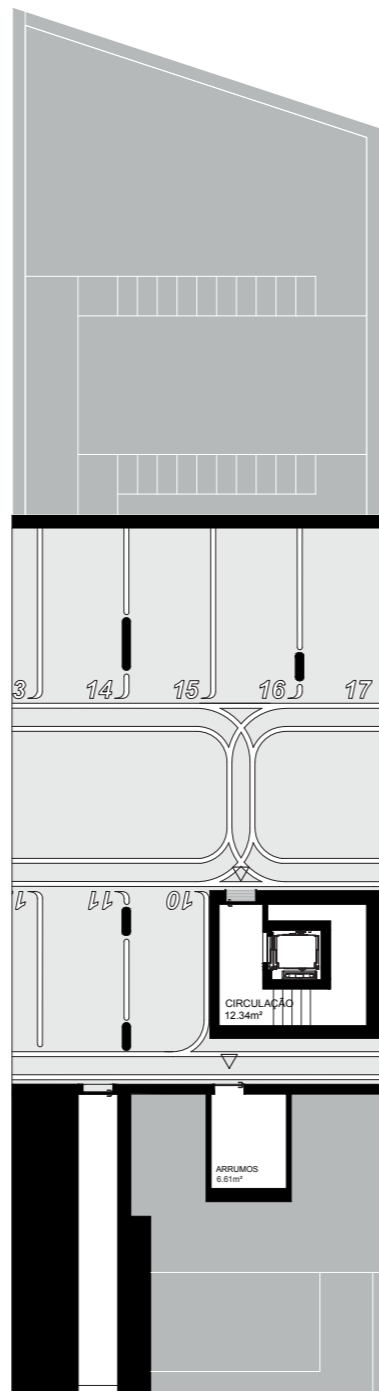
ÁREA EXTERIOR USO EXCLUSIVO - 345 m²
EXTERIOR AREAS EXCLUSIVE USE

ÁREA TOTAL - 772 m²
TOTAL AREA

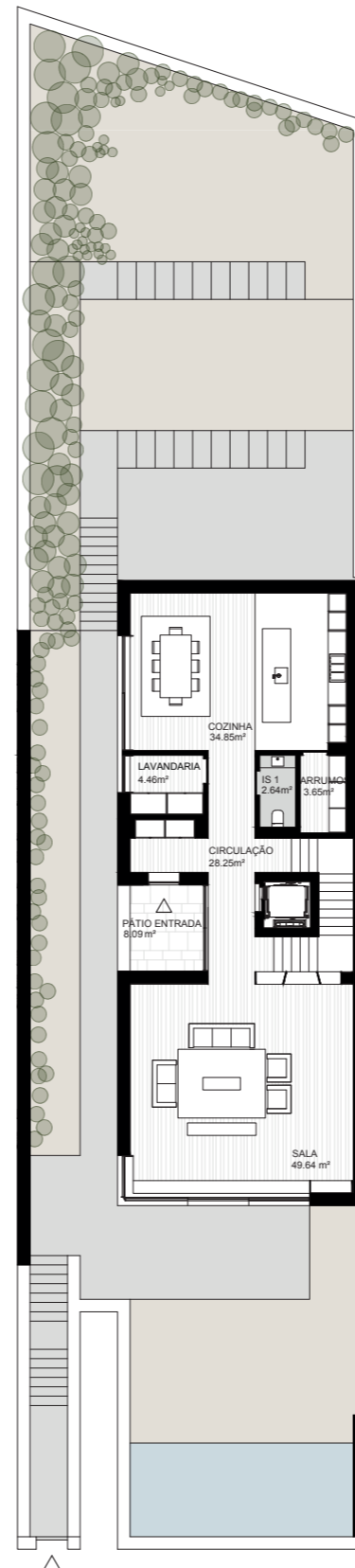
ESTACIONAMENTOS - 4
PARKING



Cave / Basement



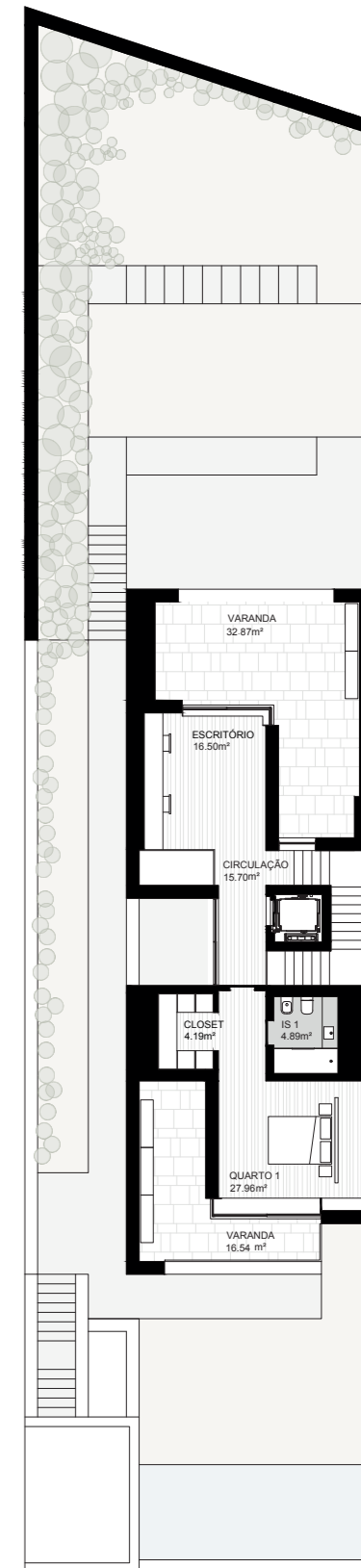
Piso Térreo / Ground floor



Piso 1 / First floor



Piso 2 / Second floor



- | | |
|---------------------------|---------------------------------|
| CIRCULAÇÃO / CIRCULATION | PATIO ENTRADA / ENTERANCE PATIO |
| ARRUMOS / STORAGE | QUARTO / BEDROOM |
| COZINHA / KITCHEN | MASTER SUITE |
| IS / BATHROOM | CLOSET |
| LAVANDARIA / LAUNDRY ROOM | VARANDA / BALCONY |
| SALA / LIVING ROOM | ESCRITÓRIO / OFFICE |

Promocão / Development



Comercialização / Sales



214 819 100 / 214 819 113
info@blue-villas.pt | www.blue-villas.pt

